

# CORE POLICY AND DEDUCTION

## POWER STEERING PUMPS

### NO CORE CREDIT

- Completely disassembled core or broken casting

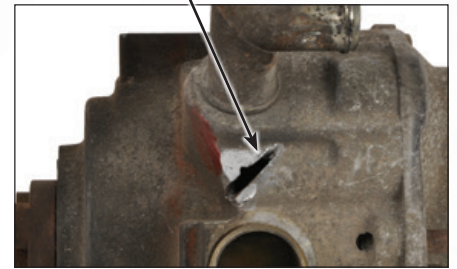
### 50% LESS CREDIT

- Missing (EVO) Electronic Variable Orifice
- EPS/EHPS (Electro-Hydraulic Power Steering) cores with cut harnesses or broken terminal connector
- EPS cores with broken plastic reservoir

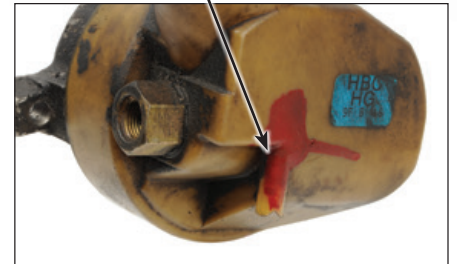
### 25% LESS CREDIT

- Broken reservoir
- Missing banjo fittings, banjo fitting valves, springs

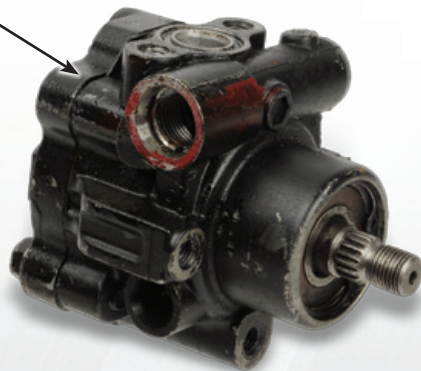
Broken Casting



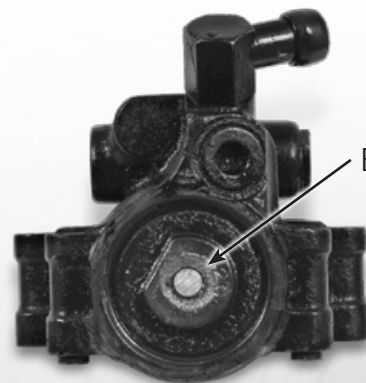
Broken Reservoir



Missing Valve



Broken Backplate



**All cores must be returned in the original box to receive full core credit.**

**All cores not returned in the box receive maximum 10% core credit.**

**Core credit allowed only for units in the current programs.**

**Only exchange cores accepted for core credit.**